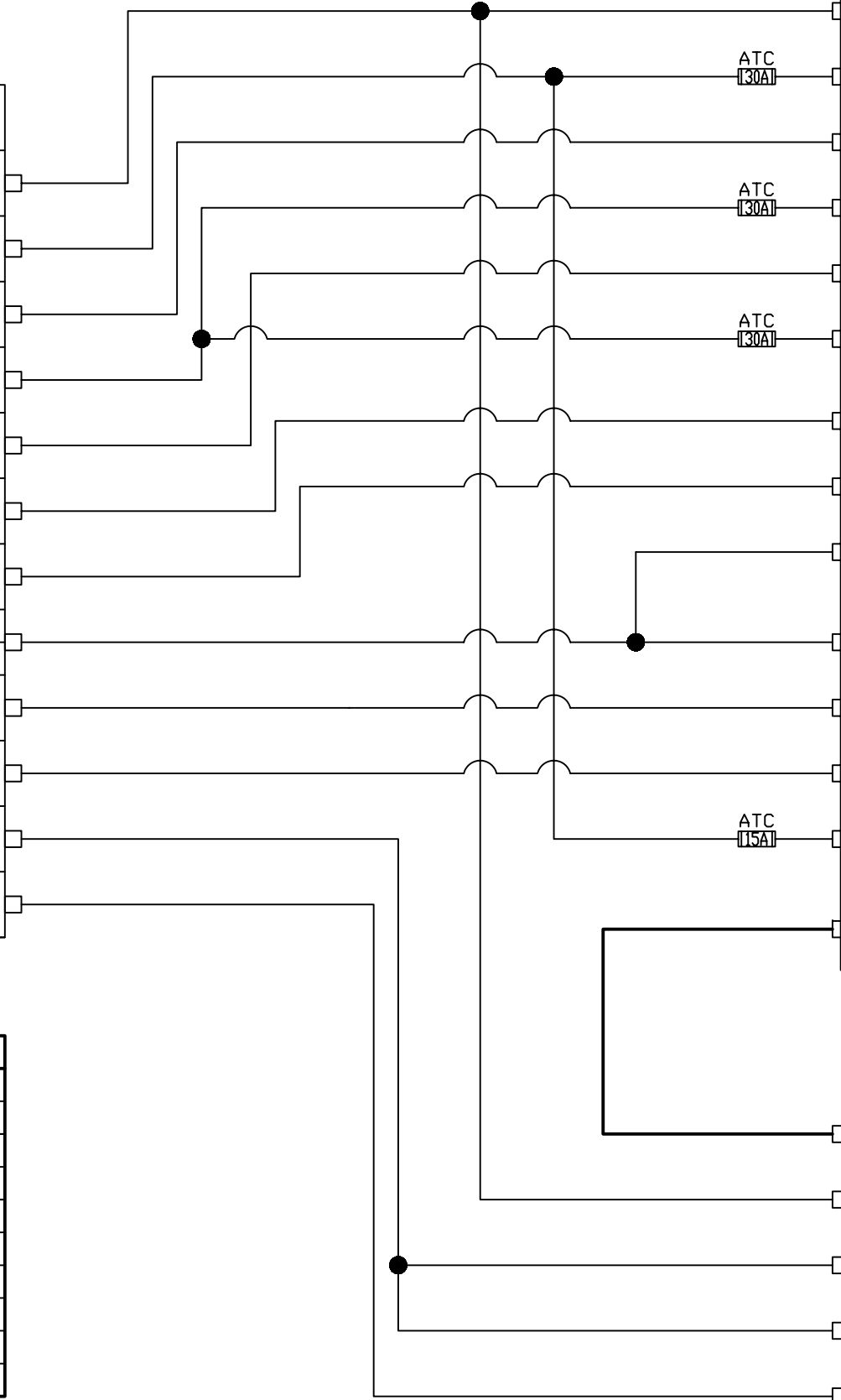


2005 Chevrolet Equinox LT

FUNCTION	LOCATION	WIRE COLOR
IGNITION	IGNITION SWITCH	PINK
+ 12VDC	IGNITION SWITCH	RED / WHITE
ACCESSORY 1	IGNITION SWITCH	ORANGE
+ 12VDC	IGNITION SWITCH	RED / WHITE
ACCESSORY 2	IGNITION SWITCH	BROWN
REAR DEFOG (->)	REAR DEFOG SWITCH	LT BLUE
BRAKE SWITCH (+)	BRAKE PEDAL	LT BLUE
GROUND	CHASSIS GROUND	CHASSIS GROUND
PARKING LIGHTS (+)	BCM	BROWN
HORN (->)	BCM	TAN
PASSLOCK II R CODE	IGNITION SWITCH	YELLOW
CLASS 2 DATABUS	OBDII PORT	PURPLE



FUNCTION	LOCATION	WIRE COLOR
IGNITION OUTPUT	H3/1	PINK
+ 12VDC (ACC 2 INPUT)	H3/2	RED/WHITE
ACCESSORY 1 OUTPUT	H3/3	ORANGE
+ 12VDC (IGN INPUT)	H3/5	RED
ACCESSORY 2 OUTPUT	H3/6	PINK / WHITE
+ 12VDC (ACC 1 INPUT)	H3/8	RED/BLACK
REAR DEFOG OUTPUT	H2/16	BLUE / WHITE
BRAKE SHUTDOWN INPUT	H2/17	BROWN
NEUTRAL SAFETY	H2/18	BLACK / WHITE
GROUND	H1/5	BLACK
PARKING LIGHT OUTPUT	H1/11	WHITE
HORN HONK OUTPUT	H1/3	PINK / WHITE
+ 12VDC	H1/2	RED
D2D	4-PIN	RED, GREEN, BLACK, BLUE

PYTHON 580 PROGRAMMED FEATURES		
MENU	FEATURE	OPTION
3	1 - TRANSMISSION MODE	2 - AUTOMATIC
3	4 - REMOTE START RUNTIME	2 - 24 MIN
3	8 - FLEX RELAY FUNCTION	2 - ACCESSORY 2
3	11 - STATUS 2 OUTPUT	2 - LATCH REAR DEFOGGER

FUNCTION	LOCATION	WIRE COLOR
D2D	4-PIN	RED, GREEN, BLACK, BLUE
IGNITION	10-PIN	PINK
PASSLOCK II R CODE	12-PIN	PURPLE / GREEN
PASSLOCK II R CODE	12-PIN	PURPLE / BROWN
CLASS II DATABUS	14-PIN	PURPLE / YELLOW

REV.	DATE	REVISION RECORD	DRN. BY
A	12/02/2011	AS INSTALLED	ACB

TITLE			DRAWN BY			CHECKED BY			SERIAL NUMBER		
Python 580 Remote Start 2005 Chevrolet Equinox LT			ACB			ACB			N/A		
SHEET NUMBER	NUMBER OF SHEETS	DRAWING DATE	PLOT DATE	MODEL NUMBER	DRAWING NUMBER						
1	1	12/02/2011	12/08/2011	Python 580	RS_Equinox						

\*\*\* ATTENTION \*\*\*  
THIS DRAWING AND THE INFORMATION CONTAINED  
HEREIN IS THE EXCLUSIVE PROPERTY OF THE  
CREATOR AND MAY NOT BE REPRODUCED OR USED BY  
OTHERS WITHOUT THE EXPRESSED WRITTEN CONSENT.

Python 580 Remote Start

XpressKit DBALL (GMS F/W)